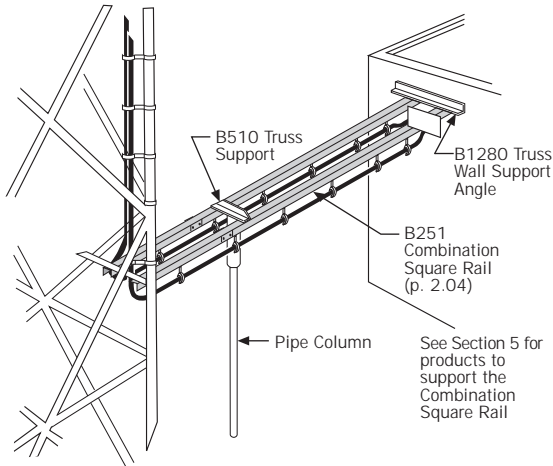


Light-Duty Bridge System

Two light-duty bridge systems are available to provide support for a small number of transmission lines when ice protection is not required.

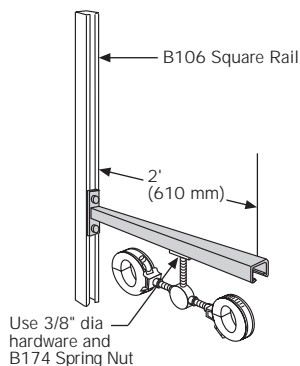
The illustration below shows Combination Square Rail (p. 2.04) supported with the B510 Truss Support and Pipe Columns (Section 3). The two adjacent rails are spaced at 1' 6-1/2" (470 mm) center-to-center and the maximum span between supports is 15' (4.572 m), based on a loading of 20.0 lb (9.1 kg) per lineal foot (305 mm). Grating Bridge Channel (p. 4.03) can also be used for a light-duty bridge. These Channels offer slightly more protection for the transmission lines, and are available in widths of either 6" (152 mm) or 9" (229 mm).

Material is hot-dip galvanized



Wall Support Arm

Wall Support Arm is a rugged 12-gauge (2.7 mm) hot-dip galvanized bracket for running transmission line along a building wall. Brackets can be mounted directly to a wall or, if vertical adjustment is required, they can be mounted to a length of B106 Square Rail, as shown.

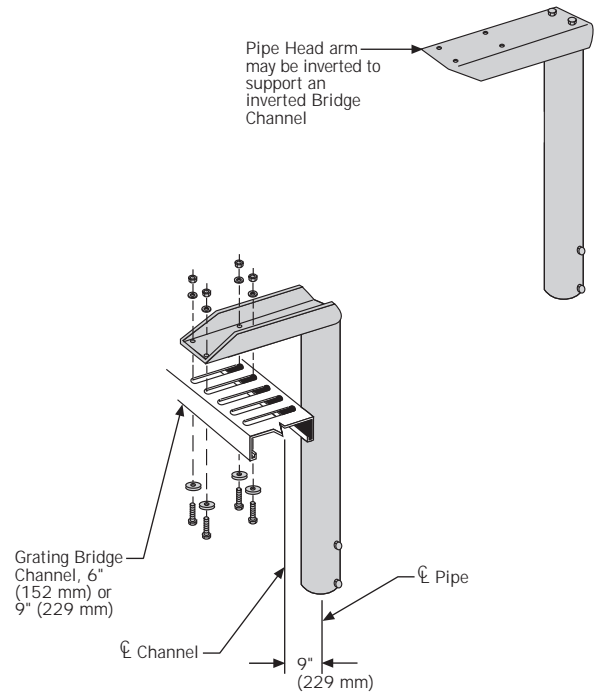


Product Number	Description
B253	Wall Support Arm

Pipe Head for Grating Bridge Channel

Pipe Heads are used with ground-mounted Pipe Columns (p. 3.05 and 3.06) or with Roof Pipe Columns (B293, p. 3.07). They allow a 2' (610 mm) adjustment range above the height of the Pipe Column and are locked in place with two 1/2" diameter set screws spaced 5" (127 mm) apart. The Pipe Head arm may be inverted to provide for an inverted Bridge Channel installation. The attaching hardware is furnished.

Material is hot-dip galvanized.

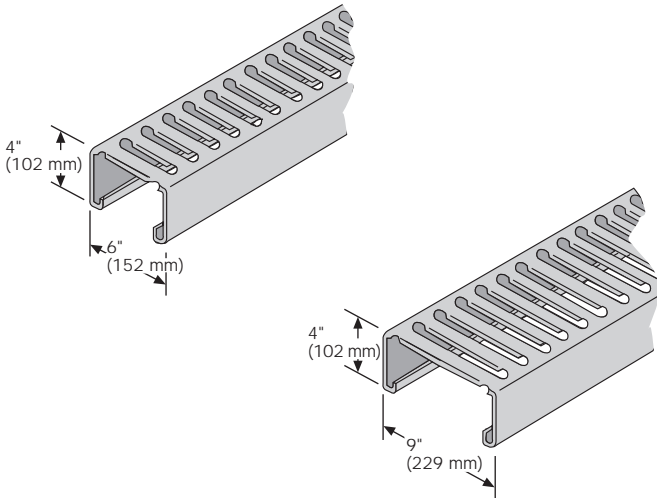


Product Number	Description
B1275	Pipe Head for Grating Bridge Channel

Grating Bridge Channel

Grating sections can be used without support columns on spans up to 20' (6.096 m). Special Tap-In Inserts (B397) are available to attach transmission-line runs with 3/8" diameter hardware.

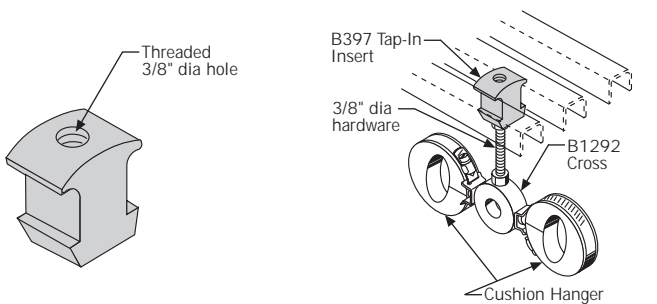
Grating sections are hot-dip galvanized 14-gauge (1.9 mm) steel.



Product Number	Description
B391	6" (152 mm) wide x 10' (3.048 m) long
B392	6" (152 mm) wide x 20' (6.096 m) long
B393	9" (229 mm) wide x 10' (3.048 m) long
B394	9" (229 mm) wide x 20' (6.096 m) long

Tap-In Insert for Grating Bridge Channel

Tap-In inserts are made to fit between the ribs of Grating Bridge Channels. They are made of a tough polyester material.

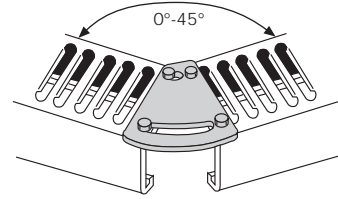


Detail of Transmission Line Support

Product Number	Description
B397	Tap-In Insert

Adjustable Splice 0°-45° for Grating Bridge Channel

Hardware included. Hot-dip galvanized.

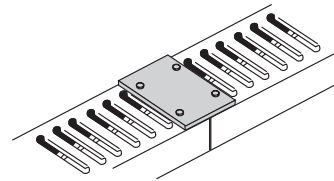


Channel must be supported within 2' (610 mm) of Splice.

Product Number	Description
B1063	6" (152 mm) wide Grating Bridge Channel
B1064	9" (229 mm) wide Grating Bridge Channel

Channel Splice for Grating Bridge Channel

Hardware included. Hot-dip galvanized.

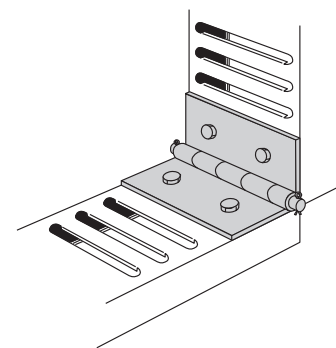


Channel must be supported within 2' (610 mm) of Splice.

Product Number	Description
B1108	6" (152 mm) wide Grating Bridge Channel
B1109	9" (229 mm) wide Grating Bridge Channel

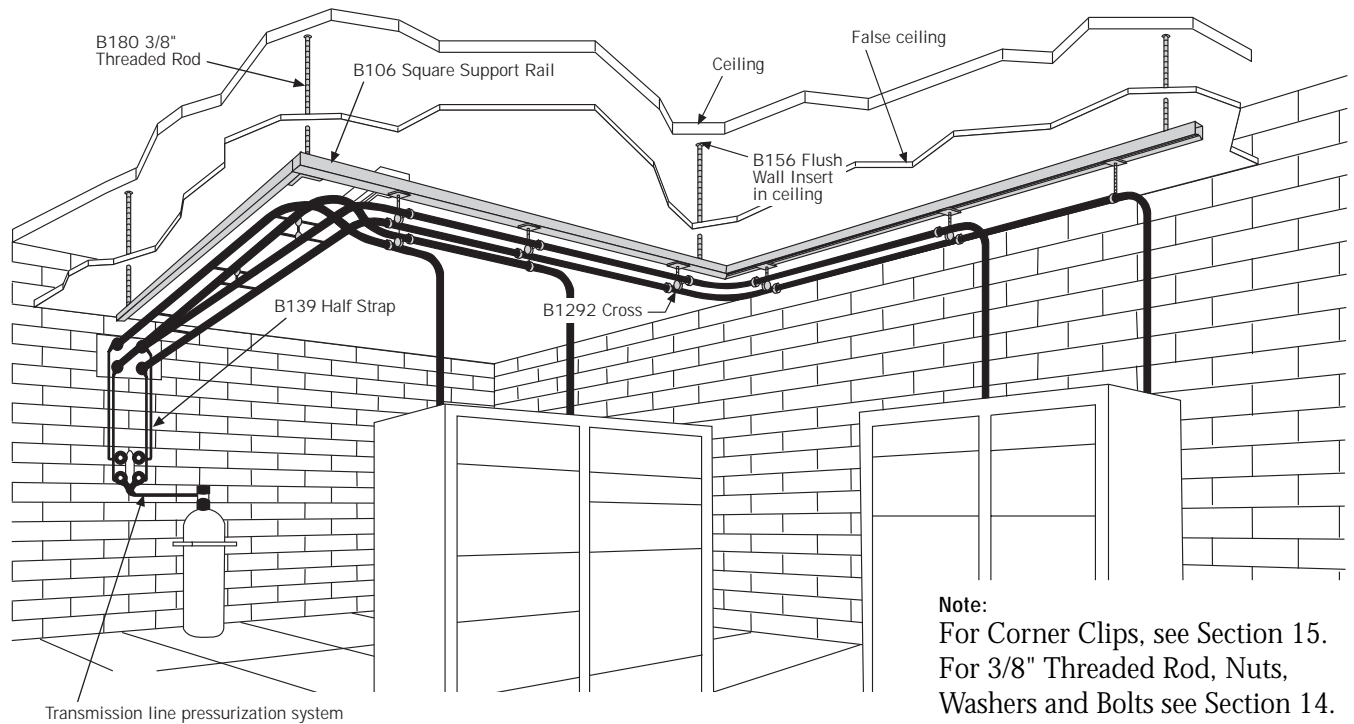
Hinged Splice 0°-90° Vertical for 6" & 9" Grating Bridge Channel

Hardware included.
Hot-dip galvanized.



Channel must be supported within 2' (610 mm) of Splice.

Product Number	Description
B1267	Hinged Splice 0°-90° Vertical



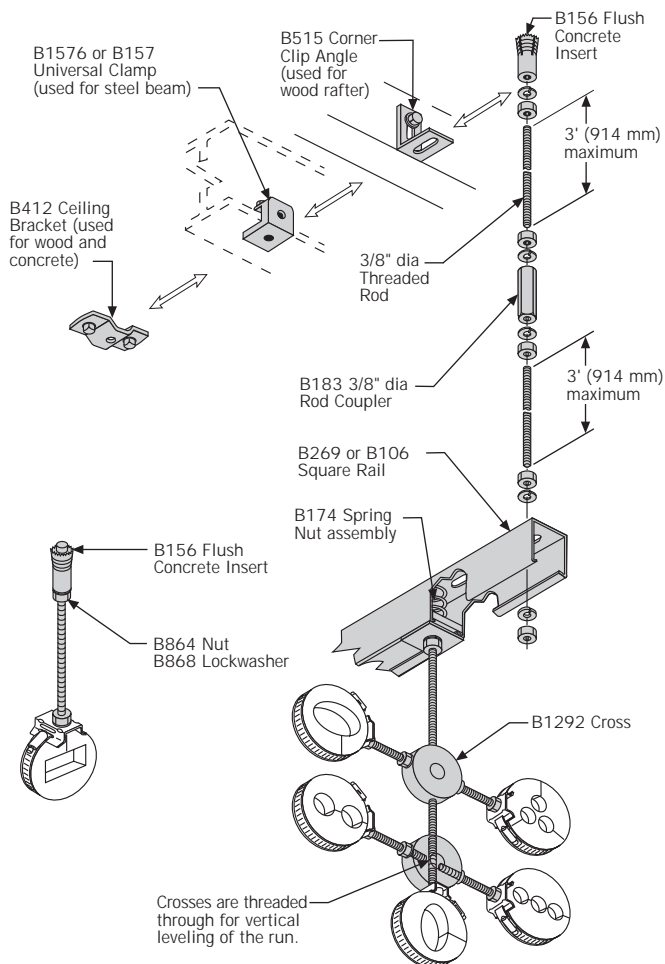
Interior Runs

Location and height of the transmission line entry through the wall and the location of equipment racks are the prime considerations in planning interior runs. The components shown here provide a versatile means of installing and leveling the runs regardless of ceiling height, building obstructions or number of bends required. The Square Support Rail accommodates a large number of waveguides. Clamps may be spaced at any convenient interval.

Interior Cushion Hangers

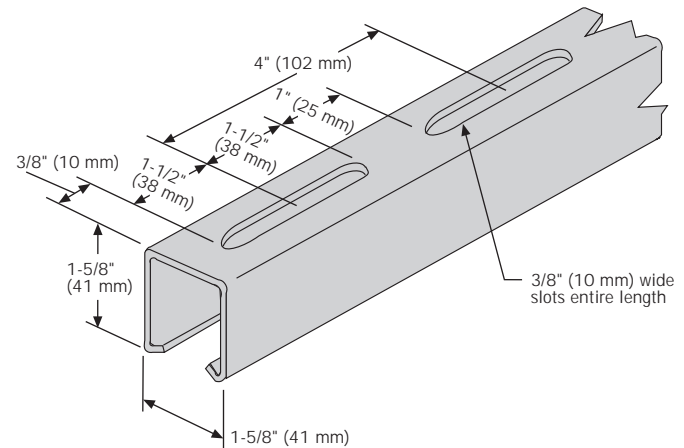
A typical use of Cushion Hanger components is shown above. Distances from ceiling to Cushion Hangers do not have to be predetermined. The versatility of these components permits final adjustments to be made during time of installation. Odd lengths of 3/8" Rod can be used to space Cushion Hangers as required. Stand-offs of this type may be made up before installation.

Typical Square Rail Installation Options



Square Rail

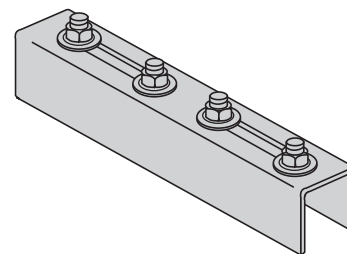
Square Rail is 12-gauge (2.7 mm) steel formed with a lip to hold B174 or B262 Spring Nuts (p. 14.10). Material is hot-dip galvanized.



Product Number	Description
B106	10' (3.048 m) long
B269	20' (6.096 m) long

Splice for Square Rail

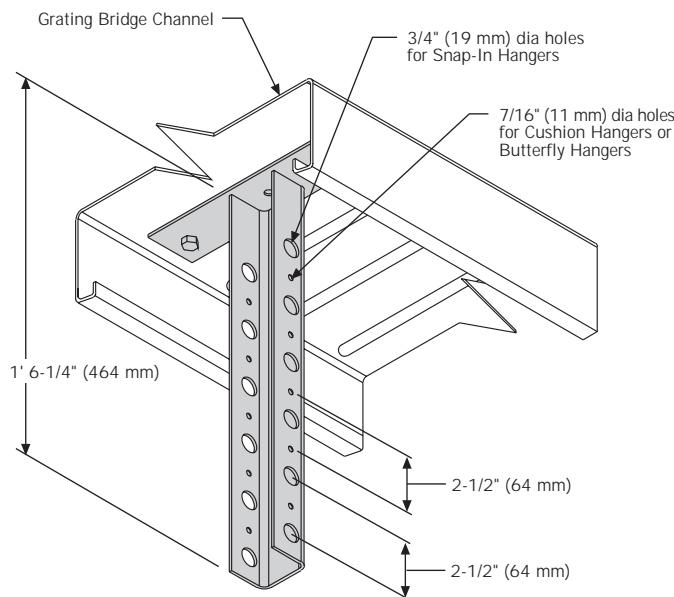
Splice is 11-gauge (3 mm) steel channel used to join sections of Square Rail. Hardware is included. Material is hot-dip galvanized.



Product Number	Description
B182	Splice for Square Rail

Grating Bridge Hanger Bracket for Snap-In Hangers, Cushion Hangers or Butterfly Hangers

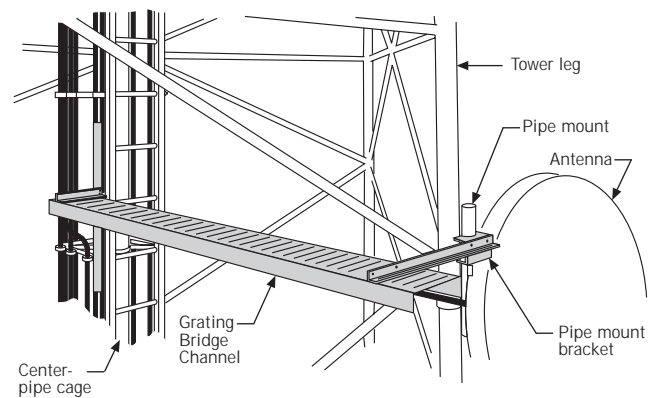
Hanger Bracket, supporting Snap-In Hangers (p. 6.07), Cushion Hangers (p. 6.02-6.04) and Butterfly Hangers (p. 6.07), bolts below the grating Bridge Channels to provide protected horizontal support for transmission line runs. The Hanger Bracket has twelve 3/4" (19 mm) diameter holes for Snap-In Hangers and ten 7/16" (11 mm) diameter holes for six Cushion Hangers or ten Butterfly Hangers. The Hanger is hot-dip galvanized after fabrication.



Product Number	Description
B1974	Grating Bridge Hanger Bracket

Support Bridge for Antenna to Center-Pipe Cage

Support Bridges enable attachment of Cushion Hangers to support transmission line from the back of an antenna to the center-pipe cage of a tower. The Support Bridges are available with 10' (3.048 m) or 20' (6.096 m) long Grating Bridge Channel, which may be cut in the field to the required length. Use B364 Galvanizing Spray or B186 Galvanizing Kit (p. 13.04) to treat raw steel edges.



Support Bridge includes:

- 1 - Angle 3" (76 mm) x 3" (76 mm) x 3/16" (5 mm), 2' 4" (711 mm) long
- 1 - Pipe mount bracket
- 1 - Angle 4" (102 mm) x 4" (102 mm) x 1/4" (6 mm), 9" (229 mm) long
- 1 - Angle 3-1/2" (89 mm) x 3-1/2" (89 mm) x 1/4" (6 mm), 3' 6" (1.067 m) long
- 2 - 5/8" dia U-bolt assemblies
- 5 - 3/16" (5 mm) thk x 1-1/2" (38 mm) round spacers with 9/16" (14 mm) dia hole
- 5 - 1/2" dia x 2" (51 mm) bolts, nuts and lockwashers
- 5 - 1/2" dia x 1-1/2" (38 mm) long bolts, nuts and lockwashers
- 1 - 6" (152 mm) wide Grating Bridge Channel

Product Number	Description
B1470	10' (3.048 m) long Grating Bridge Channel
B1090	20' (6.096 m) long Grating Bridge Channel